

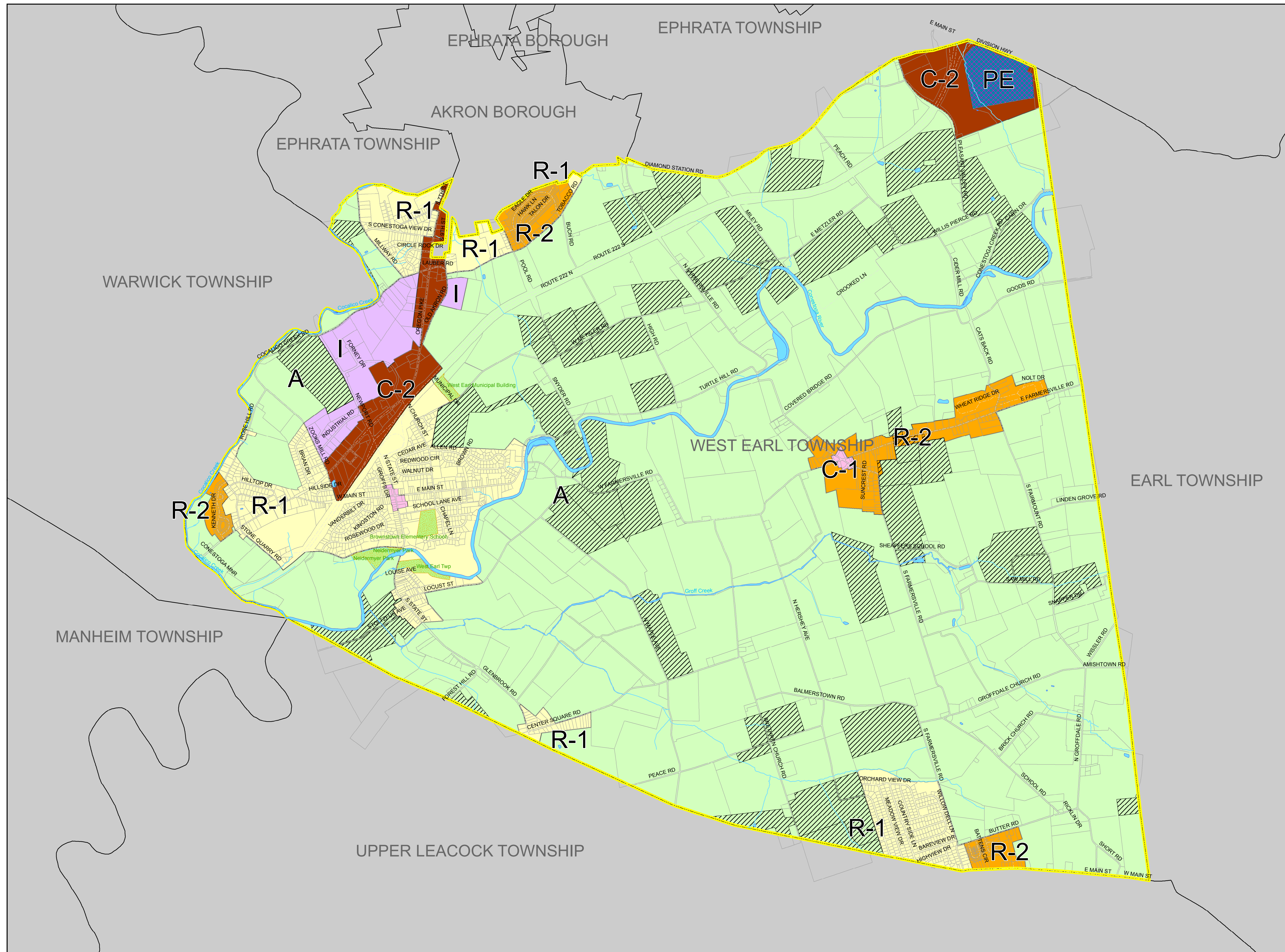
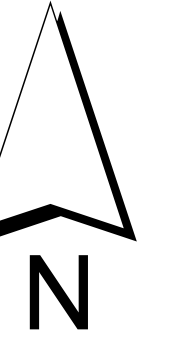
# Zoning Map

## West Earl Township, Lancaster County

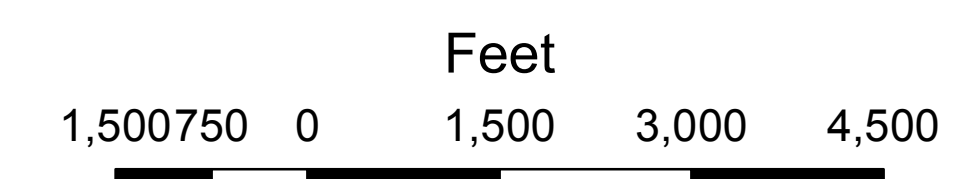
Date: June, 2017

### Legend

- Roadway Centerline
- West Earl Parks
- West Earl Township
- Ag Security
- Parcel
- Overlay District
- A (Agricultural)
- C-1 (Local Commercial)
- C-2 (Highway Commercial)
- I (Industrial)
- PE (Professional Enterprise)
- R-1 (Residential Low)
- R-2 (Residential High)
- Municipal Boundary
- Streams



Scale: 1" = 1,500'



**BECKER**  
ENGINEERING